

# FLORENCE SCHOOL DISTRICT 3

A PREMIER DISTRICT OF CHOICE

## Instructional Updates



KEEPING YOU CONNECTED  
To What Matters Most

*Ensuring Our Students Are College and/or Career Ready & Are Productive and Responsible Members of Society*

# SC Report Card Overview



## Elementary and Middle Schools



## High Schools



### Final Summative Determinations:

South Carolina will use aggregate all use aggregate all point system for each of the leading indicators for school to determine a final summative point total using a weighted point index. All points are rounded to the nearest hundredth. A final summative rating will be awarded for performance on each leading indicator by level. The performance levels are as follows:

- **Excellent** – School performance substantially exceeds the standards for progress
- **Good** – School performance exceeds the standards for progress
- **Average** – School performance meets the standards for progress
- **Below Average** – School performance is below the standard for progress
- **Unsatisfactory** – School performance fails to meet the standard for progress



## Academic Achievement SC Ready ELA Meets and Exceeds Data Overtime

	2018	2019	2021
FSD3	23.8% (383/1609)	28.9% (450/1559)	22.5% (310/1380)
State	41.7%	45.4%	42.6%

FSD3	Florence 2	Florence 5
22.5% (310/1380)	28.4% (118/416)	32.1% (156/486)





## SC Ready ELA Meets and Exceeds Data Overtime

ELA	2018	2019	2021
3 <sup>rd</sup>	34.7%	37%	28.1%
4 <sup>th</sup>	25.7%	39.4%	20.3%
5 <sup>th</sup>	21.9%	22.8%	20.7%
6 <sup>th</sup>	19.1%	28.2%	25.4%
7 <sup>th</sup>	22.2%	20.8%	19.7%
8 <sup>th</sup>	15.3%	27%	21.4%

\*\* Interventionist, Lexia Core 5, Lexia Power Up, Edgenuity,  
Read 180/System 44, "30 for 30" Reading Challenge,  
Tutoring\*\*



## Academic Achievement SC Ready Math Meets and Exceeds Data Overtime

	2018	2019	2021
FSD3	23.1% (371/1608)	23.4% (365/1559)	14.4% (199/1385)
State	44.6%	45.1%	37.3%

FSD3	Florence 2	Florence 5
14.4% (199/1385)	21.2% (88/415)	31.3% (156/499)





## SC Ready Math Meets and Exceeds Data Overtime

Math	2018	2019	2021
3 <sup>rd</sup>	39.4%	38.7%	27.8%
4 <sup>th</sup>	23.4%	29.4%	15.6%
5 <sup>th</sup>	21.2%	25.4%	14.5%
6 <sup>th</sup>	24.3%	20.2%	13.7%
7 <sup>th</sup>	15.5%	12.9%	11.2%
8 <sup>th</sup>	8.9%	15.2%	6.0%

\*\* Interventionist, DreamBox, Edgenuity\*\*



## Preparing for Success Science Data

	2018	2019	2021
FSD3	24.8% (197/795)	26.8% (211/786)	16.8% (81/481)
State	49.4%	49.1%	43.3%



	2018	2019	2021
4 <sup>th</sup>	26%	32.5%	14%
6 <sup>th</sup>	26.7%	24.7%	19.9%
8 <sup>th</sup>	19.8%	23.5%	



## End of Course Data Percent of Students Scoring C or Higher

---

	2018	2019	2021
English 1	30.8% (69/224)	35.6% (89/250)	36.5% (69/189)
Algebra 1	30.4% (68/224)	24.4% (61/250)	17.0% (30/176)
Biology 1	44.6% (100/224)	44.8% (112/250)	25.1% (48/191)
US History	27.9% (50/179)	16.9% (31/183)	8.4% (13/155)





## English Language Learners Progress

The goal is that students who are learning the English language will become proficient in English within at least five years of their initial enrollment in public schools.

---

	FSD3		State
2018	28.7%	37/129	48.8%
2019	25.6%	30/117	49.8%
2021	20.4%	22/108	31.7%

**\*\*EL Teachers, Rosetta Stone\*\***





## Graduation Rate & College and/or Career Ready

Grad Rate	FSD3	LCHS	F2	F5	State
2018	76.6%	74.6%	75%	89.1%	81%
2019	72.4%	72.7%	76.3%	77.9%	81.1%
2020	71.8%	72.1%	78.9%	83.1%	82.2%
2021	69.3%	70.3%	76.8%	83.5%	83.3%



CCR	FSD3	
2018	50.6%	89/176
2019	78.7%	137/174
2020	34.4%	88/252
2021	38.8%	87/224



- **Data Meetings-** individual school meetings to review school data and Action Plans with goals aligned to report card goals
- **Afterschool Programs-**
  - 21<sup>st</sup> Century: MSE, OMS, REM, JPT
  - LCECCA- Academic Program
- **Benchmarks:**
  - 4K- MyIGDIs
  - 5K- KRA, DRA, MAP, easyCBM
  - 1<sup>st</sup>-2<sup>nd</sup>-DRA, MAP and easyCBM
  - 3<sup>rd</sup>-9<sup>th</sup>- MAP and TE21 assessments





# In the Spotlight



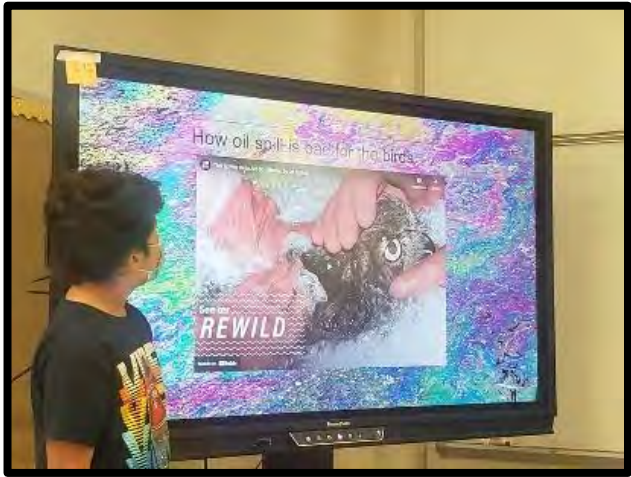
Students who read  
**30 minutes per day**  
will have encountered  
**13.7 million words**  
by graduation

30 for 30





# EMPOWERED LEARNERS ARE ENGAGED LEARNERS





## Upcoming Events

- Professional Development Day- Fri., Sept. 17<sup>th</sup>
  - Leader In Me: Core I Implementation- LCECCA & SESA 8:30-3:30 pm
  - LANGUAGE! Live 9:00– 12:00 PM
  - SEL at LCHS 9:00-11:00 am
  - School Psychologist Training 9 am
  - DreamBox: 8:30-9:30( K-2); 9:30-10:30 (3-5); 11:00-12:00 (6-8)
  - Goal book: Refresher- 10:30-11:30 am
  - Goal Book: New- 11:00-12:00 pm
  - Mentor/Advocate Training 1:00-2:00pm
- Virtual Parent Teacher Conference: Week of Sept. 20-23<sup>rd</sup>
- Mock eLearning Day- Fri., Sept. 24<sup>th</sup>
  - (K-2: option of paper packets; 3-12: Google Classroom)





# Early Learning Opportunities

## ParentChild+

Equal Possibilities From The Start

**PARENTCHILD+ PURPOSE**

ParentChild+ uses education to break the cycle of poverty for low-income families. We engage early in life and help toddlers and their parents access a path to possibility.

What we provide isn't just early literacy, it is early opportunity. For families living in underserved communities, we are a first step on the ladder to success. Their personal booster club.

It isn't as easy as ABC. It is hard work. It is crucial work. What gets us up each morning is the inspiring thought that for every child for whom we help level the playing field, the equity gap closes a bit more and the possibilities and opportunities expand.

Our mission is urgent. Join us in ensuring that all of our children have equal possibilities from the start.

**THE ACHIEVEMENT GAP STARTS EARLY AND IS DIFFICULT TO OVERCOME**

Words Heard	1-on-1 Reading	Letter Recognition
45x Million	1,000-1,700 Hours	22 Letters
13 Million	20 Hours	9 Letters
■ Middle Income		■ Low Income

**40% of U.S. children enter kindergarten unprepared**

**PARENTCHILD+ CORE MODEL OVERVIEW**


ParentChild+ is an evidence-based school readiness model that preempts the achievement gap by providing young children and their parents with learning tools and skills. The program is based on these four pillars:

**Reaching families where they are:** Families with young children receive 92 twice-weekly 30-minute visits to support healthy development and educational success.

**Building trust:** Our nationwide network of program sites hires community-based Early Learning Specialists who share a linguistic and cultural background with the families with whom they work.

**Promoting parent-child interaction:** Early Learning Specialists provide families with high quality learning tools and guidance to stimulate parent-child interaction, develop language, early literacy, social-emotional skills, and build school readiness.

**Facilitating strong community connections:** Early Learning Specialists become trusted advisors, connecting families and home-based providers to other community resources including food, housing, medical, and educational services.





## Get Ready for Waterford Upstart

Congratulations! Your child is about to begin Waterford Upstart. This at-home learning program is provided at **no cost to you**, thanks to the South Carolina Department of Education.

### Why Waterford Upstart?

- Your child will learn skills at home to help them be confident and ready for school
- On average, graduates enter kindergarten reading at almost a first-grade level
- Everything you need for the program is included\*
  - \*Computer and internet provided to qualifying families

But first, you need to attend your parent orientation.

### Come to Your Parent Orientation

**Don't miss this important meeting.** You'll learn everything you need to know about Waterford Upstart so you can get the most out of this learning opportunity for your child.

Go to [www.waterford.org/upstart](http://www.waterford.org/upstart)

