

# Florence District Three

---

## Personnel Report

December 2025

# Recognitions



December 2, 2025

National Special Education Day

December 9, 2025

School Finance Appreciation Day

# MEET THE TEAM

Our Special Education staff brings heart and hope to every classroom. Through their dedication and expertise, they create environments where students feel valued, capable, and empowered. We appreciate all you do to help our learners shine.



Amishacoe  
Fulmore Graham

Director of  
Exceptional Children



Melissa Barr

Special Education  
Content Focused Admin.



Antoinette McFadden

Special Education Clerical  
Administrative Asst.

## NATIONAL SPECIAL EDUCATION DAY DECEMBER 2, 2025



Our office location  
125 S. Blanding Street,  
Lake City, South Carolina



More Information at  
[www.fsd3.org](http://www.fsd3.org)



Phone Number  
843-374-8652

# MEET THE TEAM

Our Special Education staff brings heart and hope to every classroom. Through their dedication and expertise, they create environments where students feel valued, capable, and empowered. We appreciate all you do to help our learners shine.



Kassie Barnett

LCECC



Heather Baylor

JCL



Adria Black

SES



Mary Brayboy

DREM



Jasmine Bryant

MSE



Hedinia Castro

JPTCASM



Joyce Gamble-Brown

LCBS



Helen Gardner

JCL



Kim Garvin

JPTCASM



Gwen Gerken

LCECC



Natasha Graham

DREM



Vannassa Hannah

DREM



Trymekia Harrison

LCECC



Maye Ann Inocando

LCECC



Audrey Jones

SES



Michelle James

LCBS



Earline McClary

Virtual School



Alecea Miller

LCBS



Patrice Nelson

DREM



Rena Roberson

MSE

**NATIONAL SPECIAL EDUCATION DAY**  
DECEMBER 2, 2025



Our office location  
125 S. Blanding Street,  
Lake City, South Carolina



More Information at  
[www.fsd3.org](http://www.fsd3.org)



Phone Number  
843-374-8652



# MEET THE TEAM

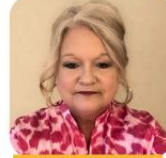
Our Special Education staff brings heart and hope to every classroom. Through their dedication and expertise, they create environments where students feel valued, capable, and empowered. We appreciate all you do to help our learners shine.



Forestine Scott  
JCL/Virtual Sch.



Abigail Webb  
LCHS



Wanda Weber  
OCASM



Rian Williamson  
SES



Deborah Wynter  
LCHS



Latosha Bacote  
MSE



Gracie Brayboy  
LCHS



Betty Eaddy  
DREM



Rhodena Felder  
LCHS



Aquilla Graham  
SES



Cynthia Graham  
DREM



Keenan Graham  
LCECC



Darlene Hammond  
LCECC



Jakayla Leach  
LCECC



Crystal Manigault  
LCECC



Tiffany McAllister  
LCECC



Rosheima McFadden  
MSE



Joe Pressley  
LCECC



Joshua Reynolds  
LCHS



Tamkio Williams  
LCECC

**NATIONAL SPECIAL EDUCATION DAY**  
DECEMBER 2, 2025



Our office location  
125 S. Blanding Street,  
Lake City, South Carolina



More Information at  
[www.fsd3.org](http://www.fsd3.org)



Phone Number  
843-374-8652

# MEET THE TEAM

Our Finance Department plays a vital role in the success of our district. Numbers, budgets, payroll, and problem-solving—our Finance Department does it all with skill and a smile to ensure that our students, staff, and schools are supported each day.



**FINANCE APPRECIATION DAY**  
**DECEMBER 9, 2025**



Our office location  
125 S. Blanding Street,  
Lake City, South Carolina



More Information at  
[www.fsd3.org](http://www.fsd3.org)



Phone Number  
843-374-8652



# Sign Up Today



## Application launching



Your dream job is waiting!

Sign up for Florence District Three's job alerts and be the first to know about exciting opportunities, amazing benefits, and a community that supports your growth.



Don't miss out — stay connected!



#Florence3.0 #NowHiring #JoinFSD3



[www.fsd3.org](http://www.fsd3.org)



843-374-8652



Job Alerts

Certified Positions

Classified Positions

Administrative Postions

# Florence District Three

---

## Proposed Calendars 2026-2027

**Proposed:**

Drafts A & B



# Calendar Days

## Number of days needed for the calendar

Student Days – 180

Teacher PD Days - 10

Inclement Weather Days – 3



FAQ:

Keep in Mind...



358/403 = 89% of Staff Responded

- Total Responses
- Complete Responses: 358

**Florence County School District Three  
2026-2027 Modified School Year Calendar**

July 2026							0
SUN	MON	TUE	WED	THU	FRI	SAT	
			01	02	03	04	
05	06	07	08	09	10	11	
12	13	14	15	16	17	18	
19	20	21	22	23	24	25	
26	27	28	29	30	31		

August 2026							21
SUN	MON	TUE	WED	THU	FRI	SAT	
						01	
02	03	04	05	06	07	08	
09	10	11	12	13	14	15	
16	17	18	19	20	21	22	
23	24	25	26	27	28	29	
30	31						

September 2026							21
SUN	MON	TUE	WED	THU	FRI	SAT	
		01	02	03	04	05	
06	07	08	09	10	11	12	
13	14	15	16	17	18	19	
20	21	22	23	24	25	26	
27	28	29	30				

October 2026							18
SUN	MON	TUE	WED	THU	FRI	SAT	
				01	02	03	
04	05	06	07	08	09	10	
11	12	13	14	15	16	17	
18	19	20	21	22	23	24	
25	26	27	28	29	30	31	

November 2026							16
SUN	MON	TUE	WED	THU	FRI	SAT	
01	02	03	04	05	06	07	
08	09	10	11	12	13	14	
15	16	17	18	19	20	21	
22	23	24	25	26	27	28	
29	30						

December 2026							14
SUN	MON	TUE	WED	THU	FRI	SAT	
		01	02	03	04	05	
06	07	08	09	10	11	12	
13	14	15	16	17	18	19	
20	21	22	23	24	25	26	
27	28	29	30	31			

Inclement Weather Days  
October 6th, February 9th, February 10th

**July**  
1-3.....District Shutdown  
6.....4<sup>th</sup> of July Holiday (Observed)  
13-16.....New Teacher Orientation  
22.....Opening Ceremonies (PD 1)  
23.....Prof Dev. Workdays (PD 2)  
27-28.....Prof Dev. Days (PD 3-4)  
29-30.....Teacher Workdays (PD 5-6)  
30.....Open House

**August**  
3.....First Day for Students

**September**  
3.....Parent Teacher Conferences  
4.....Early Dismissal for Students  
7.....Labor Day (No School)

**October**  
5.....4<sup>th</sup> Day for Students  
6.....Prof Dev. Workdays (PD 7)  
7-9.....Intercession Period

**November**  
23-27.....Thanksgiving Holiday

**December**  
18.....Early Dismissal for Students  
18.....90<sup>th</sup> Day for Students  
21-31.....Winter Break

**January**  
1.....Winter Break  
4.....School Level PD (PD 8)  
5.....Classes Resume  
18.....MLK Holiday

**February**  
9.....School Level PD (PD 9)  
9.....Parent Teacher Conferences  
10-12.....Intercession Period

**March**  
15.....135<sup>th</sup> Day for Students  
26.....Good Friday Holiday  
29-31.....Spring Break

**April**  
1-2.....Spring Break

**May**  
25.....180<sup>th</sup> Day for Students  
25.....Early Dismissal for Students  
26.....Teacher Workday (PD 10)  
31.....Memorial Day Holiday

**June**

January 2027							18
SUN	MON	TUE	WED	THU	FRI	SAT	
					01	02	
03	04	05	06	07	08	09	
10	11	12	13	14	15	16	
17	18	19	20	21	22	23	
24	25	26	27	28	29	30	
31							

February 2027							16
SUN	MON	TUE	WED	THU	FRI	SAT	
	01	02	03	04	05	06	
07	08	09	10	11	12	13	
14	15	16	17	18	19	20	
21	22	23	24	25	26	27	
28							

March 2027							19
SUN	MON	TUE	WED	THU	FRI	SAT	
	01	02	03	04	05	06	
07	08	09	10	11	12	13	
14	15	16	17	18	19	20	
21	22	23	24	25	26	27	
28	29	30	31				

April 2027							20
SUN	MON	TUE	WED	THU	FRI	SAT	
				01	02	03	
04	05	06	07	08	09	10	
11	12	13	14	15	16	17	
18	19	20	21	22	23	24	
25	26	27	28	29	30		

May 2027							17
SUN	MON	TUE	WED	THU	FRI	SAT	
						01	
02	03	04	05	06	07	08	
09	10	11	12	13	14	15	
16	17	18	19	20	21	22	
23	24	25	26	27	28	29	
30	31						

June 2027							0
SUN	MON	TUE	WED	THU	FRI	SAT	
		01	02	03	04	05	
06	07	08	09	10	11	12	
13	14	15	16	17	18	19	
20	21	22	23	24	25	26	
27	28	29	30				

Florence District Three is a SCDE approved eLearning district. The current provision allows the district to use up to five (5) days in eLearning. These days are for emergency situations, such as inclement weather or utility interruptions (for example, water line breaks or power outages). They are not planned days on the calendar.

**Florence County School District Three  
2026-2027 Modified School Year Calendar**

July 2026							2
SUN	MON	TUE	WED	THU	FRI	SAT	
			01	02	03	04	
05	06	07	08	09	10	11	
12	13	14	15	16	17	18	
19	20	21	22	23	24	25	
26	27	28	29	30	31		

August 2026							21
SUN	MON	TUE	WED	THU	FRI	SAT	
						01	
02	03	04	05	06	07	08	
09	10	11	12	13	14	15	
16	17	18	19	20	21	22	
23	24	25	26	27	28	29	
30	31						

September 2026							21
SUN	MON	TUE	WED	THU	FRI	SAT	
		01	02	03	04	05	
06	07	08	09	10	11	12	
13	14	15	16	17	18	19	
20	21	22	23	24	25	26	
27	28	29	30				

October 2026							16
SUN	MON	TUE	WED	THU	FRI	SAT	
				01	02	03	
04	05	06	07	08	09	10	
11	12	13	14	15	16	17	
18	19	20	21	22	23	24	
25	26	27	28	29	30	31	

November 2026							16
SUN	MON	TUE	WED	THU	FRI	SAT	
01	02	03	04	05	06	07	
08	09	10	11	12	13	14	
15	16	17	18	19	20	21	
22	23	24	25	26	27	28	
29	30						

December 2026							14
SUN	MON	TUE	WED	THU	FRI	SAT	
		01	02	03	04	05	
06	07	08	09	10	11	12	
13	14	15	16	17	18	19	
20	21	22	23	24	25	26	
27	28	29	30	31			

Inclement Weather Days  
October 5th, February 15th and February 16th

**July**

- 1-3.....District Shutdown  
6.....4<sup>th</sup> of July Holiday (Observed)  
13-16.....New Teacher Orientation  
21.....Opening Ceremonies (PD 1)  
22-23.... Prof Dev. Workdays (PD 2-3)  
27-28.... Teacher Work Days (PD 4-5)  
28.....Open House  
29.....Teacher Workdays (PD 6)  
30.....First Day for Students

**August**

- September**  
3.....Parent Teacher Conferences  
4.....Early Dismissal for Students  
7.....Labor Day (No School)

**October**

- 1.....45<sup>th</sup> Day for Students  
2.....Prof Dev. Workdays (PD 7)  
5-9.....Intercession Period

**November**

- 23-27.....Thanksgiving Holiday

**December**

- 18.....Early Dismissal for Students  
18.....90<sup>th</sup> Day for Students  
21-31.....Winter Break

**January**

- 1.....Winter Break  
4.....School Level PD (PD 8)  
5.....Classes Resume  
18.....MLK Holiday

**February**

- 11.....Parent Teacher Conferences  
12.....School Level PD (PD 9)  
15-19.....Intercession Period

**March**

- 17.....135<sup>th</sup> Day for Students  
26.....Early Dismissal Day for Students  
29-31.....Spring Break

**April**

- 1-2.....Spring Break

**May**

- 26.....180<sup>th</sup> Day for Students  
26.....Early Dismissal for Students  
27.....School Level PD (PD 10)  
31.....Memorial Day Holiday

**June**

January 2027							18
SUN	MON	TUE	WED	THU	FRI	SAT	
					01	02	
03	04	05	06	07	08	09	
10	11	12	13	14	15	16	
17	18	19	20	21	22	23	
24	25	26	27	28	29	30	
31							

February 2027							14
SUN	MON	TUE	WED	THU	FRI	SAT	
	01	02	03	04	05	06	
07	08	09	10	11	12	13	
14	15	16	17	18	19	20	
21	22	23	24	25	26	27	
28							

March 2027							20
SUN	MON	TUE	WED	THU	FRI	SAT	
	01	02	03	04	05	06	
07	08	09	10	11	12	13	
14	15	16	17	18	19	20	
21	22	23	24	25	26	27	
28	29	30	31				

April 2027							20
SUN	MON	TUE	WED	THU	FRI	SAT	
				01	02	03	
04	05	06	07	08	09	10	
11	12	13	14	15	16	17	
18	19	20	21	22	23	24	
25	26	27	28	29	30		

May 2027							18
SUN	MON	TUE	WED	THU	FRI	SAT	
						01	
02	03	04	05	06	07	08	
09	10	11	12	13	14	15	
16	17	18	19	20	21	22	
23	24	25	26	27	28	29	
30	31						

June 2027							6
SUN	MON	TUE	WED	THU	FRI	SAT	
		01	02	03	04	05	
06	07	08	09	10	11	12	
13	14	15	16	17	18	19	
20	21	22	23	24	25	26	
27	28	29	30				

Florence District Three is a SCOE approved eLearning district. The current provision allows the district to use up to five (5) days in eLearning. These days are for emergency situations, such as inclement weather or utility interruptions (for example, water line breaks or power outages). They are not planned days on the calendar.



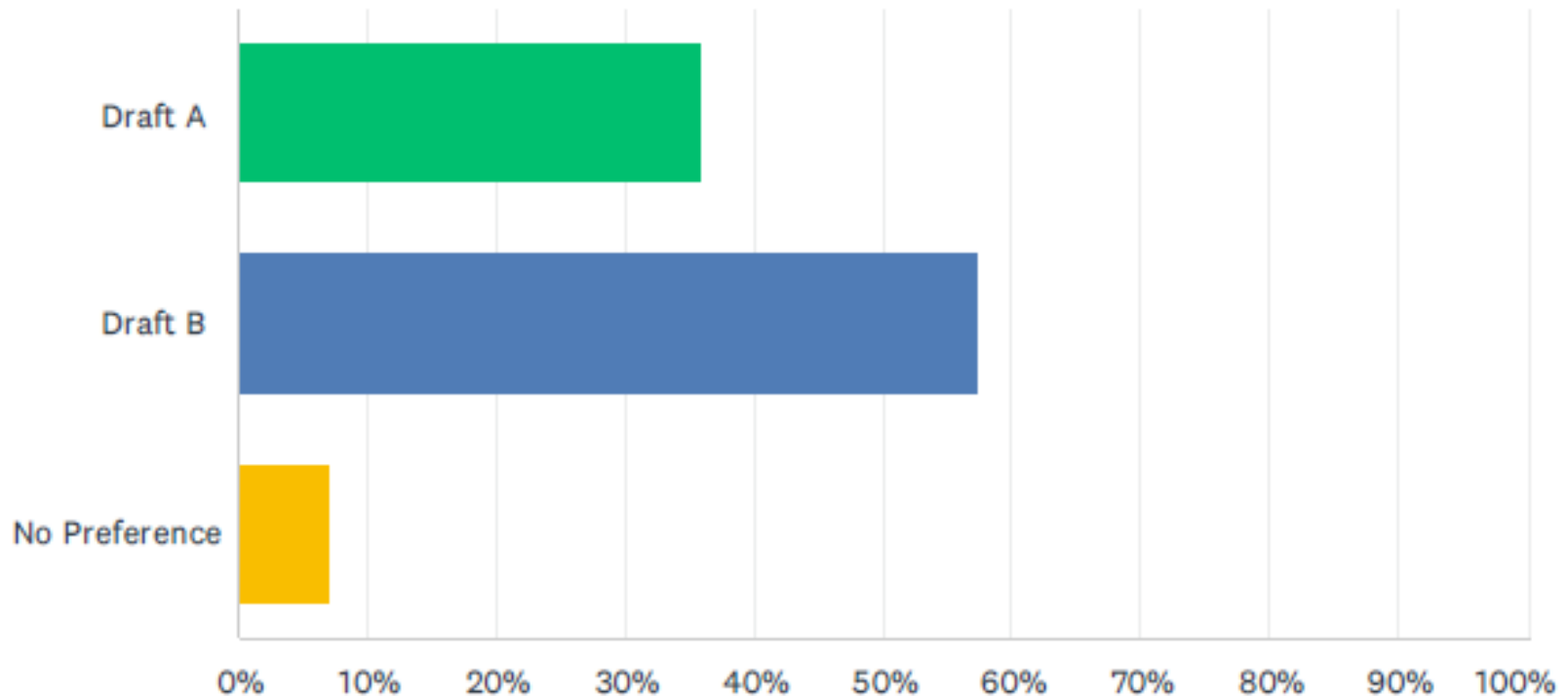
	Calendar A Draft	Calendar B Draft
First Day for Teachers	July 22, 2026	July 21, 2026
First Day for Students	August 3, 2026	July 30, 2026
Weather Days (If needed)	October 6 <sup>th</sup> , February 9 <sup>th</sup> , February 10 <sup>th</sup>	October 5 <sup>th</sup> , February 15 <sup>th</sup> , February 16 <sup>th</sup>
Last Student Day	May 25, 2027	May 26, 2027
Last Day for Teachers	May 26, 2027 (May 28 <sup>th</sup> if all Weather Days are Used)	May 27 <sup>th</sup>
Holidays	July 6 <sup>th</sup> – Fourth of July Sept. 7 <sup>th</sup> – Labor Day Oct. 7-9 <sup>th</sup> – Intercession Period Nov. 23-27 <sup>th</sup> – Thanksgiving Break Dec. 21- Jan. 1 <sup>st</sup> – Winter Break Jan. 18 <sup>th</sup> – Dr. Martin L. King, Jr. Day Feb. 10-12 <sup>th</sup> – Intercession Period March 26 <sup>th</sup> – Good Friday March 29-April 2 <sup>nd</sup> – Spring Break May 31 <sup>st</sup> – Memorial Day	July 6 <sup>th</sup> – Fourth of July Sept. 7 <sup>th</sup> – Labor Day Oct. 5-9 <sup>th</sup> – Intercession Period Nov. 23-27 <sup>th</sup> – Thanksgiving Break Dec. 21- Jan. 1 <sup>st</sup> – Winter Break Jan. 18 <sup>th</sup> – Dr. Martin L. King, Jr. Day Feb. 15-19 <sup>th</sup> – Intercession Period March 29-April 2 <sup>nd</sup> – Spring Break May 31 <sup>st</sup> – Memorial Day
Teacher PD/ Workdays	July 22-28, July 29-30, October 6, Jan. 4, Feb. 9, May 26	July 21-23, July 27-28., July 29, October 4, Jan. 4 <sup>th</sup> , Feb. 12, May 27



# Q1: Which calendar do you prefer for the 2026-2027 school year?

## Q1 Which calendar do you prefer?

Answered: 358 Skipped: 0



# Q1: Which calendar do you prefer for the 2026-2027 school year?

ANSWER CHOICES	RESPONSES	
Draft A	35.75%	128
Draft B	57.26%	205
No Preference	6.98%	25
TOTAL		358