

Florence District Three

Proposed Calendars

2022-2023

Proposed:

Drafts A & B

STAGE ONE: RESEARCH COMMITTEE

THE PURPOSE OF THIS GROUP IS TO PULL TOGETHER RESEARCH; GATHERING INFORMATION TO ENSURE THE DISTRICT IS AWARE OF ALL CONSIDERATIONS AND FACTORS.

STAGE TWO: EXPLORATORY

THE PURPOSE OF THIS GROUP WOULD BE TO REVIEW THE RESEARCH, BRAINSTORM ANY ADDITIONAL CONSIDERATIONS/FACTORS, AND DETERMINE HOW FEEDBACK WOULD BE COLLECTED FROM ALL STAKEHOLDERS; GATHER FEEDBACK, DEVELOP AN OFFICIAL PROPOSAL.

2022-2023 Calendar Selection Timeline

Stakeholder Meetings

[Tinyurl.com/FSD3ProposedCalendar](https://tinyurl.com/FSD3ProposedCalendar)

Thursday, January 13, 2022 – 6:30 p.m.

Tuesday, January 18, 2022 – 12:30 p.m.

Tuesday, January 25, 2022 – 6:30 p.m.

Thursday, January 27, 2022 – 12:30 p.m.

Tuesday, February 1, 2022 – 6:30 p.m.

Survey Open

January 14 – February 11, 2022

Presented to the Board for Vote

Thursday, February 24, 2022

Draft A - Traditional Calendar

Draft B - Modified Schedule Calendar

Number of days needed for the calendar

Student Days – 180

Teacher PD Days - 10

eLearning Days for Inclement Weather – 3



FAQ:

Calendar Days

Can students begin earlier?

Currently, State law requires that students begin no earlier than the 3rd Monday of August. Should this change, we will be able to consider a new calendar. **FSD3 will submit a request for a waiver.**



FAQ:

Frequently Asked Questions

Benefits of a Modified Calendar

Why is Florence School District Three presenting a Modified Calendar option?



FAQ:

Frequently Asked Questions

Academic Support

The schedule will allow for continued, expanded opportunities for students to receive Academic Support, in addition to opportunities currently offered by the district.



- Increased opportunities for academic support and extra help throughout the year
- Increased opportunities to make up seat time (Secondary)
- First Semester Ends before Winter Break

Robust Intercession Programs

The schedule will allow for continued, expanded students to participate in performance camps, interest camps, showcases & performances, in addition to opportunities currently offered by the district.

- Arts Focused
 - Artists in Residence
 - Student Performances/Showcases at the end of the Intercession Period
- Leadership Development – Essential Soft Skills
- Enrichment Opportunities – Dual Enrollment/FT
- Athletic
- Cheerleading
- Band
- ROTC
- CATE programs



Benefits of a Modified Calendar

Robust Intercession Opportunities

The schedule will allow for opportunities for students to earn internship hours, in addition to opportunities currently offered by the district.

- **Increased** opportunities for work-based internships
 - CATE Programs
 - Exceptional Children – Job Shadowing
- **Increased** opportunities for discovery of College and Career Options
 - Opportunities for College Tours
 - College Applications/ FAFSA



Robust Intercession Opportunities

The schedule will provide opportunities for students and their families to connect with more support programs, in addition to daily interventions currently offered by the district.

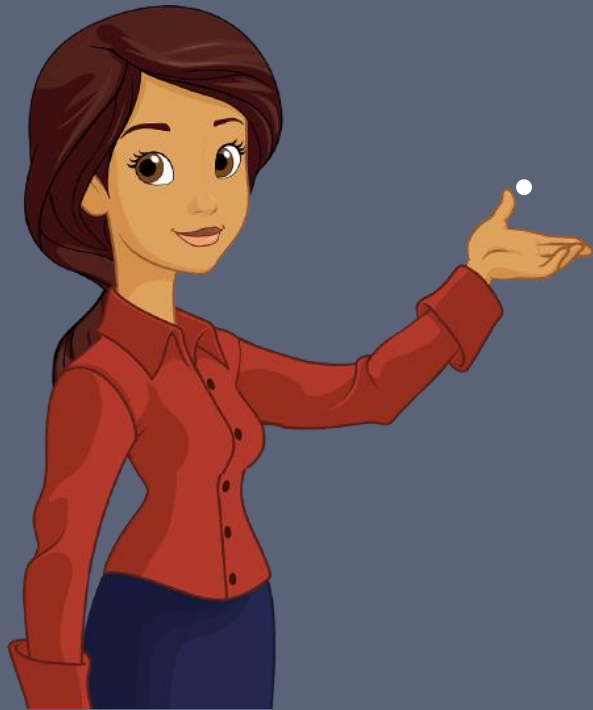
- Social Emotional Camps throughout the year for Students & Families
 - Additional sustained support
 - Decreased suspensions



Safety

The schedule will allow more opportunities, in addition to the daily deep cleaning and sanitizing currently in place within the district.

- Additional opportunities for Deep Cleaning/Sanitizing throughout the year
- Additional opportunities for Safety Professional Development throughout the year for Staff to address needs that arise, as guidelines and recommendations change.



Decreased Absences/Burnout

- Preventing student and teacher burnout
- Decrease teacher and student absences
 - Time to handle medical appointments or personal business, throughout the school year.
 - Increased opportunities for vacations during non-peak seasons.



FAQ:

Benefits of a Modified Calendar

Florence County School District Three 2022-2023 School Calendar

Calendar A- Traditional

July 2022							0
S	M	T	W	TH	F	S	
					1	2	
3	4	5	6	7	8	9	
10	11	12	13	14	15	16	
17	18	19	20	21	22	23	
24	25	26	27	28	29	30	

August 2022							13
S	M	T	W	TH	F	S	
	1	2	3	4	5	6	
7	8	9	10	11	12	13	
14	15	16	17	18	19	20	
21	22	23	24	25	26	27	
28	29	30	31				

September 2022							20
S	M	T	W	TH	F	S	
				1	2	3	
4	5	6	7	8	9	10	
11	12	13	14	15	16	17	
18	19	20	21	22	23	24	
25	26	27	28	29	30		

October 2022							20
S	M	T	W	TH	F	S	
						1	
2	3	4	5	6	7	8	
9	10	11	12	13	14	15	
16	17	18	19	20	21	22	
23	24	25	26	27	28	29	
30	31						

November 2022							16
S	M	T	W	TH	F	S	
		1	2	3	4	5	
6	7	8	9	10	11	12	
13	14	15	16	17	18	19	
20	21	22	23	24	25	26	
27	28	29	30				

December 2022							12
S	M	T	W	TH	F	S	
				1	2	3	
4	5	6	7	8	9	10	
11	12	13	14	15	16	17	
18	19	20	21	22	23	24	
25	26	27	28	29	30	31	

7/01/22.....240 Day Employees Begin
 7/01/22.....230 Day Employees Begin
 7/15/22.....220 Day Employees Begin
 7/15/22.....210 Day Employees Begin
 8/01/22.....200 Day Employees Begin
 8/08/22.....190 Day Employees Begin

July

4.....4th of July Holiday (Observed)
 5-8.....District Shutdown

August

1-4.....New Teacher Orientation
 8.....Opening Ceremonies (PD 1)
 9-11.....PD & Teacher Workdays (PD 2-4)
 15.....First Day for Students

September

16.....Teacher Workday (PD 5)
 22.....Parent Teacher Conferences
 23.....1/2 Day for Students

October

21.....Professional Development (PD 6)

November

8.....Election Day
 21-25.....Thanksgiving Holiday

December

16.....1/2 Day for Students
 19-30.....Christmas Holiday

January

3.....School Level PD (PD 7)
 4.....Classes Resume
 16.....MLK Holiday
 17.....90th Day for Students

February

17.....Teacher Workday (PD 8)
 23.....Parent Teacher Conferences
 24.....1/2 Day for Students

March

17.....Professional Development (PD 9)

April

6.....135th Day for Students
 7.....Good Friday Holiday
 10-14.....Spring Break

May

29.....Memorial Day Holiday

June

5.....180th Day for Students
 5.....1/2 Day for Students
 6.....Teacher Workday (PD 10)

06/06/23.....Last Day 190 Day Employees
 06/09/23.....Last Day 200 Day Employees
 07/15/23.....Last Day 210 Day Employees
 07/15/23.....Last Day 220 Day Employees
 06/28/23.....Last Day 230 Day Employees
 06/30/23.....Last Day 240 Day Employees

School Days	
Holidays	
Professional Days	
Half Day for Students	
eLearning/Inclement Weather Days	

January 2023							19
S	M	T	W	TH	F	S	
1	2	3	4	5	6	7	
8	9	10	11	12	13	14	
15	16	17	18	19	20	21	
22	23	24	25	26	27	28	
29	30	31					

February 2023							19
S	M	T	W	TH	F	S	
			1	2	3	4	
5	6	7	8	9	10	11	
12	13	14	15	16	17	18	
19	20	21	22	23	24	25	
26	27	28					

March 2023							22
S	M	T	W	TH	F	S	
			1	2	3	4	
5	6	7	8	9	10	11	
12	13	14	15	16	17	18	
19	20	21	22	23	24	25	
26	27	28	29	30	31		

April 2023							14
S	M	T	W	TH	F	S	
						1	
2	3	4	5	6	7	8	
9	10	11	12	13	14	15	
16	17	18	19	20	21	22	
23	24	25	26	27	28	29	
30							

May 2023							22
S	M	T	W	TH	F	S	
	1	2	3	4	5	6	
7	8	9	10	11	12	13	
14	15	16	17	18	19	20	
21	22	23	24	25	26	27	
28	29	30	31				

June 2023							3
S	M	T	W	TH	F	S	
				1	2	3	
4	5	6	7	8	9	10	
11	12	13	14	15	16	17	
18	19	20	21	22	23	24	
25	26	27	28	29	30		

eLearning Inclement Weather Days: October 21, 2021 January 3, 2022 & February 17, 2022
 June 7th, June 8th and June 9th will become Professional Development Days if October 21st, January 3rd and February 17th are needed as eLearning Inclement Weather Days.

Florence County School District Three 2022-2023 School Calendar

Calendar B - Modified

July 2022							0
S	M	T	W	TH	F	S	
					1	2	
3	4	5	6	7	8	9	
10	11	12	13	14	15	16	
17	18	19	20	21	22	23	
24	25	26	27	28	29	30	

August 2022							23
S	M	T	W	TH	F	S	
	1	2	3	4	5	6	
7	8	9	10	11	12	13	
14	15	16	17	18	19	20	
21	22	23	24	25	26	27	
28	29	30	31				

September 2022							21
S	M	T	W	TH	F	S	
				1	2	3	
4	5	6	7	8	9	10	
11	12	13	14	15	16	17	
18	19	20	21	22	23	24	
25	26	27	28	29	30		

October 2022							18
S	M	T	W	TH	F	S	
						1	
2	3	4	5	6	7	8	
9	10	11	12	13	14	15	
16	17	18	19	20	21	22	
23	24	25	26	27	28	29	
30	31						

November 2022							16
S	M	T	W	TH	F	S	
		1	2	3	4	5	
6	7	8	9	10	11	12	
13	14	15	16	17	18	19	
20	21	22	23	24	25	26	
27	28	29	30				

December 2022							12
S	M	T	W	TH	F	S	
				1	2	3	
4	5	6	7	8	9	10	
11	12	13	14	15	16	17	
18	19	20	21	22	23	24	
25	26	27	28	29	30	31	

7/01/22.....240 Day Employees Begin
 7/01/22.....230 Day Employees Begin
 7/01/22.....220 Day Employees Begin
 7/11/22.....210 Day Employees Begin
 7/18/22.....200 Day Employees Begin
 7/25/22.....190 Day Employees Begin

July

4.....4th of July Holiday (Observed)
 5-8.....District Shutdown
 11-14.....New Teacher Orientation
 25.....Opening Ceremonies (PD 1)
 26-28.....PD & Teacher Workdays (PD 2-4)

August

1.....First Day for Students
 1.....180 Day Employees Begin

September

1.....Parent Teacher Conferences
 2.....1/2 Day for Students

October

5.....Teacher Workday (PD 5)
 5-7.....Intercession Days for Students

November

8.....Election Day
 21-25.....Thanksgiving Holiday

December

16.....1/2 Day for Students
 16.....90th Day for Students
 19-30.....Christmas Holiday

January

2.....New Year's Holiday Observed
 3.....Teacher Workday (PD 6)
 4.....Classes Resume
 16.....MLK Holiday

February

2.....Parent Teacher Conferences
 3.....1/2 Day for Students
 20-21.....Professional Dev. (PD 7-8)
 22-24.....Intercession Days for Students

March

14.....135th Day for Students
 17.....Teacher Workday (PD 9)

April

7.....1/2 Day for Students
 10-14.....Spring Break
 17.....Teacher Workday (PD 10)

May

26.....180th Day for Students
 25-26.....1/2 Day for Students
 26.....Last Day for 180-190 Day Employees
 29.....Memorial Day Holiday

June

05/30/23.....Last Day 200 Day Employees
 06/08/23.....Last Day 210 Day Employees
 06/15/23.....Last Day 220 Day Employees
 06/28/23.....Last Day 230 Day Employees
 06/30/23.....Last Day 240 Day Employees

School Days
Intercession Days
Holidays
Professional Days
Half Day for Students
eLearning/Inclement Weather Days

January 2023							19
S	M	T	W	TH	F	S	
1	2	3	4	5	6	7	
8	9	10	11	12	13	14	
15	16	17	18	19	20	21	
22	23	24	25	26	27	28	
29	30	31					

February 2023							15
S	M	T	W	TH	F	S	
			1	2	3	4	
5	6	7	8	9	10	11	
12	13	14	15	16	17	18	
19	20	21	22	23	24	25	
26	27	28					

March 2023							22
S	M	T	W	TH	F	S	
			1	2	3	4	
5	6	7	8	9	10	11	
12	13	14	15	16	17	18	
19	20	21	22	23	24	25	
26	27	28	29	30	31		

April 2023							14
S	M	T	W	TH	F	S	
						1	
2	3	4	5	6	7	8	
9	10	11	12	13	14	15	
16	17	18	19	20	21	22	
23	24	25	26	27	28	29	
30							

May 2023							20
S	M	T	W	TH	F	S	
	1	2	3	4	5	6	
7	8	9	10	11	12	13	
14	15	16	17	18	19	20	
21	22	23	24	25	26	27	
28	29	30	31				

June 2023							0
S	M	T	W	TH	F	S	
				1	2	3	
4	5	6	7	8	9	10	
11	12	13	14	15	16	17	
18	19	20	21	22	23	24	
25	26	27	28	29	30		

eLearning Inclement Weather Days: October 5, February 20 & February 21
 October 6th will become a Professional Development Day if October 5th is used as an eLearning Inclement Weather Day.
 February 22nd and February 23rd will become a Professional Development Day if February 20th and 21st are needed as eLearning Inclement Weather Days

	Traditional Calendar - A	Modified Calendar - B
Last Student Day	June 5 th	May 26 th
Last Day for Teachers	June 6 th June 9 th if all 3 eLearning dates used	May 26 th (Teacher PD Days are made up during Intercessions)
Holidays	July 4 th – Fourth of July Sept. 5 th – Labor Day November 8 th – Election Day Nov. 21-25- Thanksgiving Break Dec. 19-Jan. 2 nd – Winter Break Jan. 16 th – Dr. Martin L. King, Jr. Day April 7 th April 10-14 th – Spring Break May 29 th – Memorial Day	July 4 th – Fourth of July Sept. 5 th – Labor Day Oct. 5-7 - Intercession November 8 th – Election Day Nov. 21-25- Thanksgiving Break Dec. 19-Jan. 2 nd – Winter Break Jan. 16 th – Dr. Martin L. King, Jr. Day Feb. 22-24 th - Intercession April 10-14 th – Spring Break May 29 th – Memorial Day
Teacher PD/ Workdays	Aug. 8-11, Sept. 16, Oct. 21, Jan. 3, Feb. 17, March 17, June 6	Aug. 8-11, Sept. 16, Oct. 5, Jan. 3, Feb. 20-21, March 17, April 17
eLearning Days	Oct. 21 st , Jan. 3 rd , Feb. 17	Oct. 5 th , Feb. 20, Feb. 21 st
Student ½ Days	Sept. 23, Dec. 16, Feb. 24, June 5 th	Sept. 2 nd , Dec. 16, Feb. 3 rd , May 25, May 26



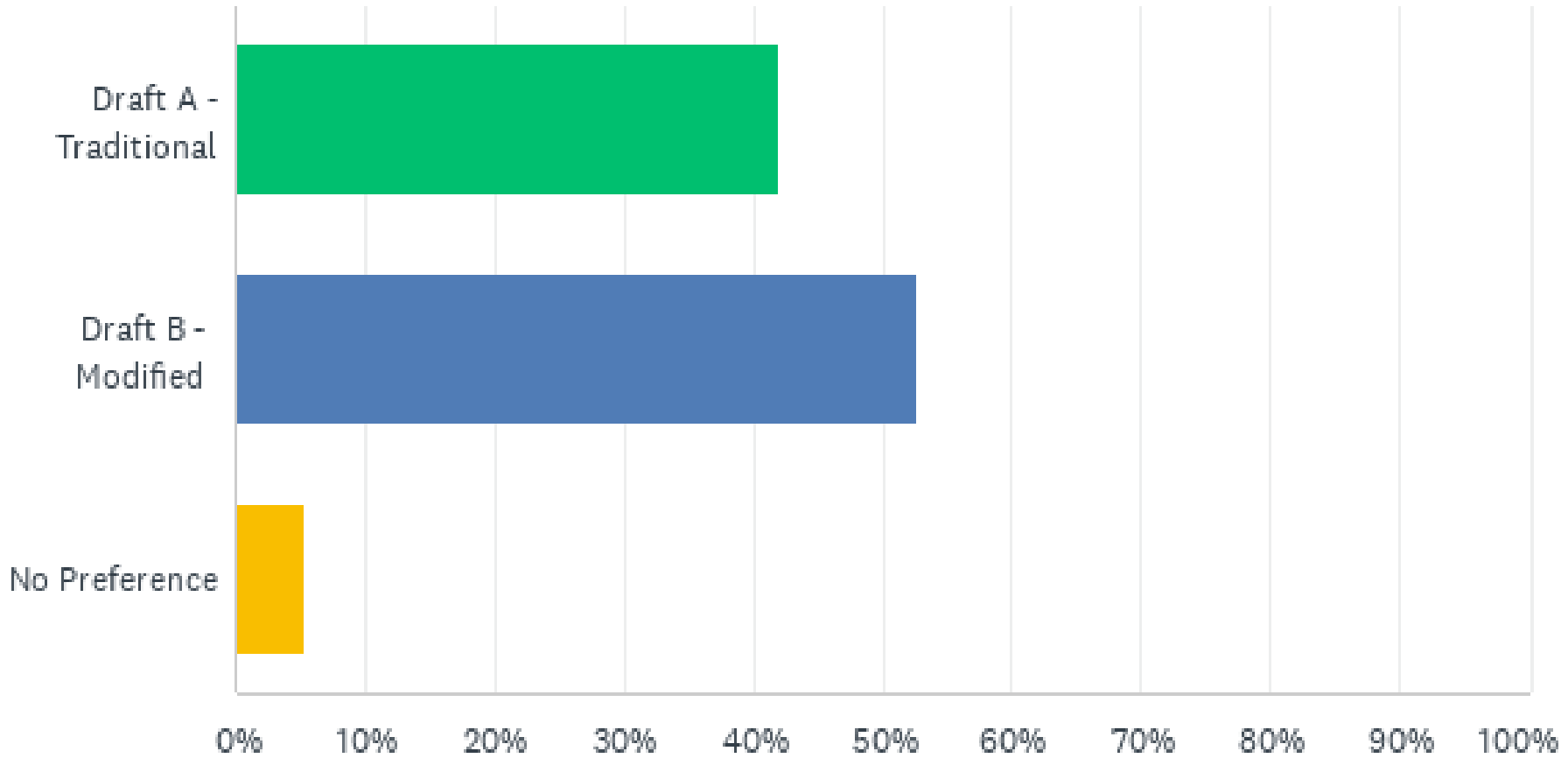
PROFILE OF:

COMPARISON OF CALENDARS

Staff Feedback – Preference Modified

Calendar

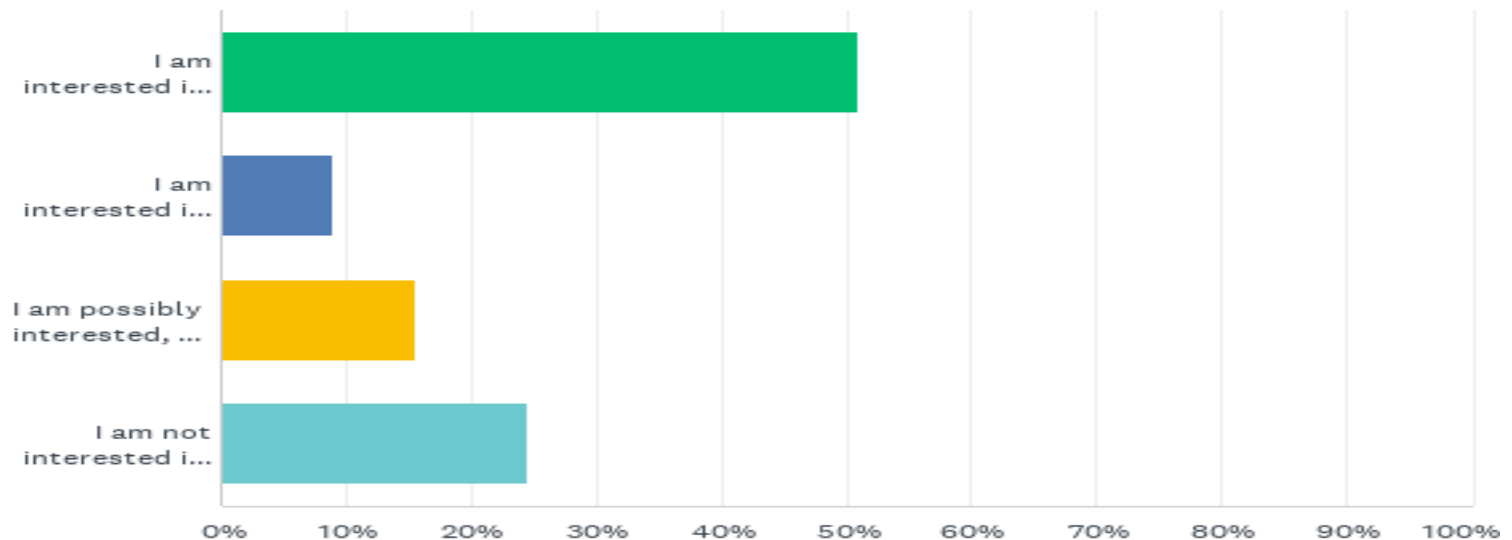
Answered: 475 90% Staff



Stakeholder Feedback – Preference Modified

Calendar

ANSWER CHOICES	RESPONSES	
Parent/Guardian	79.11%	303
Community Member	3.66%	14
Student	12.27%	47
Other (please specify)	4.96%	19
TOTAL		383



QUESTIONS???

